

3 Reference information

3.1 Organizational operating structure

- Library steering committee

Director of library : Naohiko TANAKA

Member : Kazumi TSUNODA, Nobuhisa SAKAKIBARA, Koji FUKUI, Akira SHIMADA, Hitoshi KUWATA, Yasushi SAKUYAMA, Kyoko KATO, Miyoko HIRASHIMA

Based on rules, the library steering committee consists of a director of library, two professors from the College of Engineering, one professor from the College of Systems Engineering and Science, one professor from the College of Engineering and Design, one professor from the School of Architecture, one professor from the Graduate School of Engineering and Science, and one staff member from the library.

Term : Director 1st Apr. 2018~31st Mar. 2021 (including academic appointment)

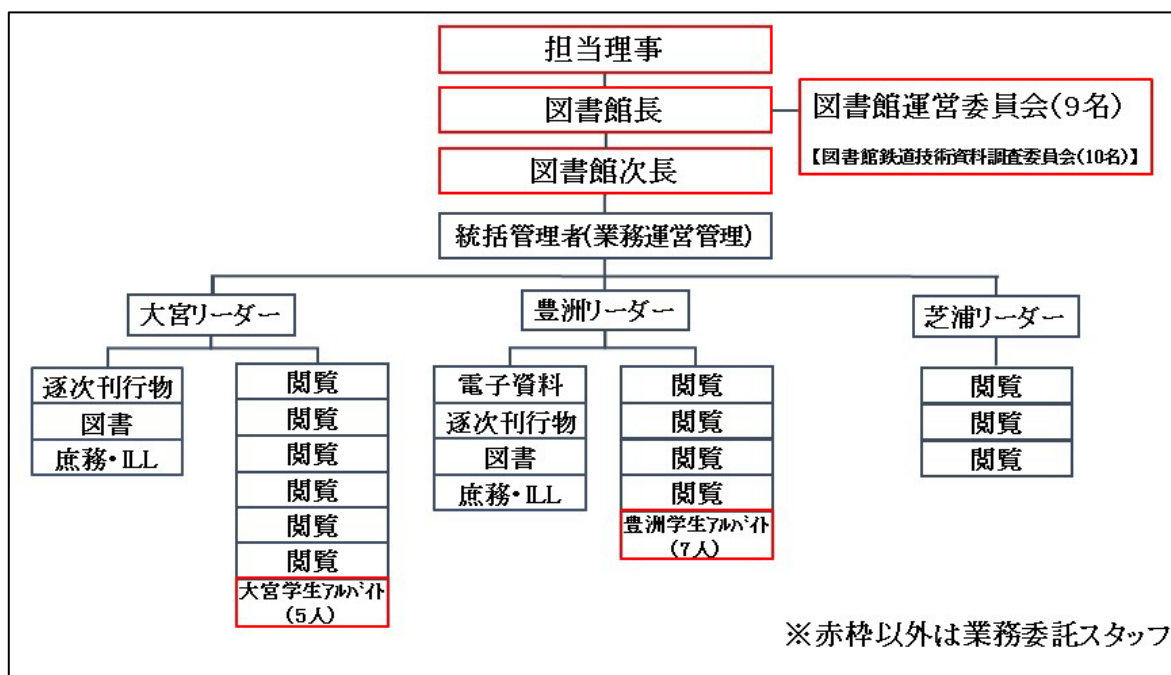
: Members 1st Apr. 2018~31st Mar. 2020

- Library Research Committee of Railway Technology Material

University member: Five persons, Outside university member: Five persons

Term: 1st Apr.2017~31st Mar. 2019

- Library organizational chart



- Aim for fiscal year of FY2018

Strengthening of library functions as a support organization for study and educational research

1. Improvement of students utilization

- Promote the utilization of library materials through holding workshops according to materials, students participatory events, and shelf arrangement in collaboration with students.
- Enrich library services and library facilities based on fact finding through library satisfaction surveys, as well as informing efficient utilization of the library through guidance and public relation activities.

2. Improve library HP and operability of the library system

- Introduce additional functions by updating the system through guidance and increasing ease of use and usage frequency of the library system.
- Releasing library collection to the public through HP and considering services and operation to the outside users.

3. Promotion of utilization of E-materials and database and enriching remote access

- Strengthening assistance of educational research activities through enriching E-materials which can be used 24 hours from both inside and outside the library by remote access.
- Promoting the utilization of e-book contents and increasing utilization of databases for job-hunting, continuing operation of guidance for job-hunting and public relations activities through collaboration with the career support section.
- improving volume of access for major e-journals and strengthening guidance for how to use the database.